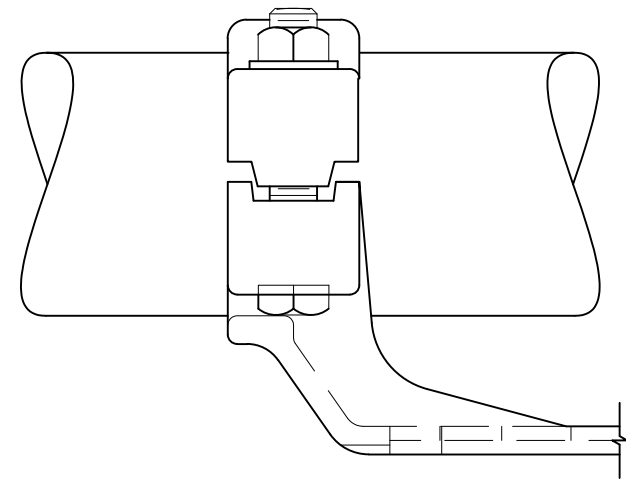


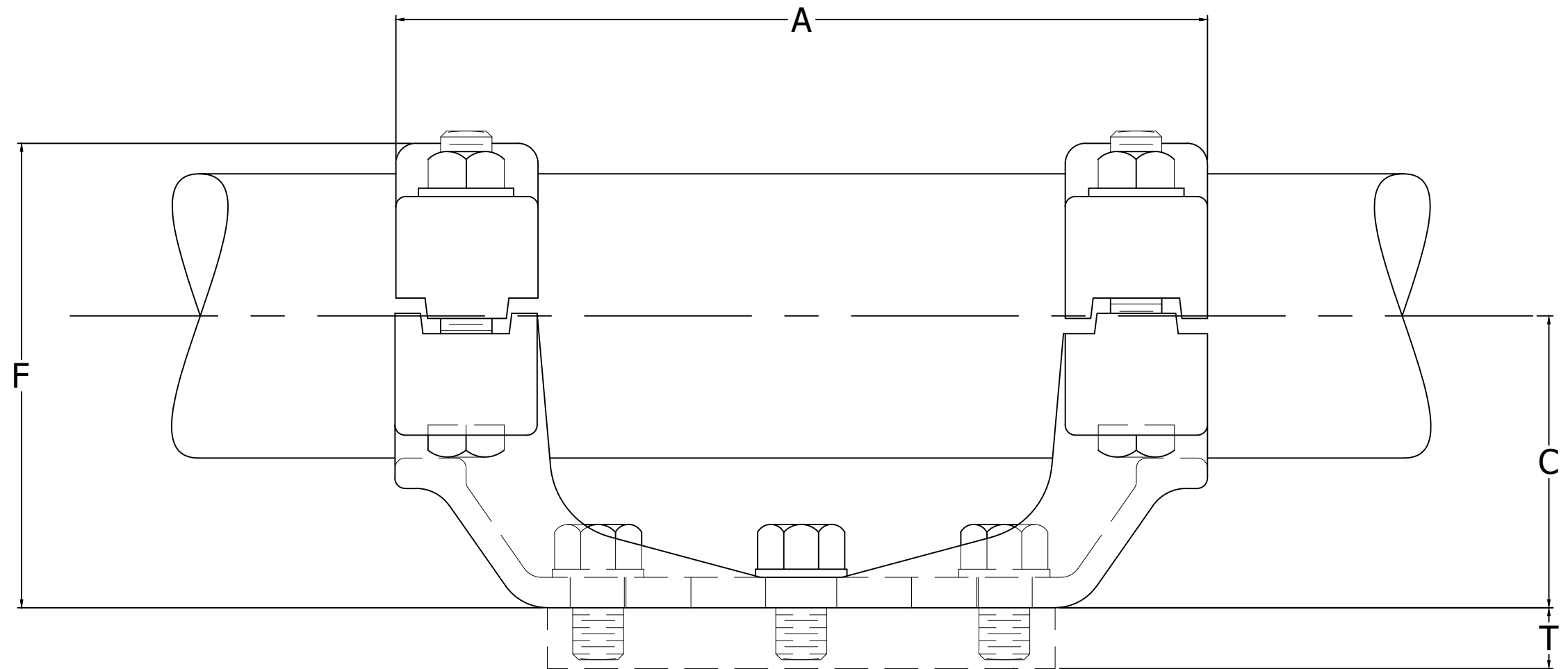
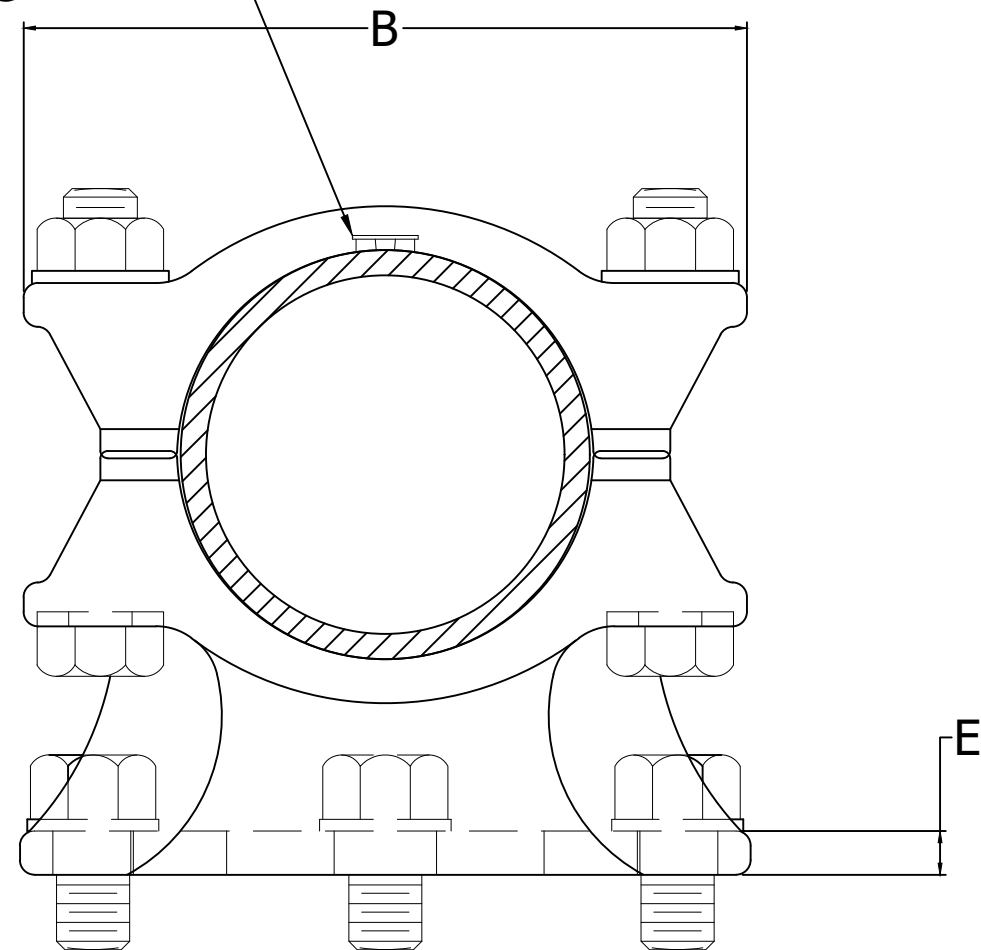
SLIP-FREE CLAMPING



RIGID CLAMPING



**ANTI-CHATTERING SPRING**



**SPACER FOR ITEMS WITH "BE" SUFFIX ONLY**

**NOTES:**

- MATERIAL:** CASTINGS: 356-T6 ALUMINUM ALLOY  
CLAMPING HARDWARE: ALUMINUM ALLOY  
MOUNTING HARDWARE: GALVANIZED STEEL
- "AUR" BUS SUPPORT IS A COMBINATION SLIP-FREE OR RIGID CLAMPING TYPE. DESIRED CLAMPING IS OBTAINED BY ROTATING CAP 180 DEGREES.
- REGULARLY SUPPLIED WITH CAP SCREWS AND LOCK WASHERS FOR MOUNTING TO CAP OF INSULATOR. WHEN MOUNTING TO BASE OF INSULATOR IS REQUIRED ADD "B" TO CATALOG NUMBER TO ASSURE OBTAINING BOLTS, NUTS, AND LOCK WASHERS. EXAMPLE: AUR-14-3-B.
- DIMENSIONS IN INCHES.

80094	10/01/2019	HG	HG	PTB
EC #	DATE	CHG BY	CKD BY	APPD BY

DESC OF DWG:  
FIXED TYPD IN NOTE 3 AND EDITED FORMAT  
--  
--  
--  
REASON (S) FOR CHANGE: --  
DISPOSITION OF MAT'L: --

THIRD ANGLE PROJECTION  
CONFIDENTIAL: THIS DRAWING AND ITS CONTENTS ARE CONFIDENTIAL AND THE EXCLUSIVE PROPERTY OF HUBBELL POWER SYSTEMS. NO PUBLICATION, DISTRIBUTION, OR COPIES MAY BE MADE WITHOUT THE WRITTEN CONSENT OF HUBBELL POWER SYSTEMS. HUBBELL POWER SYSTEMS UNPUBLISHED ALL RIGHTS RESERVED UNDER THE COPYRIGHT LAWS.



TITLE ALUMINUM BUS SUPPORT TUBE TO INSULATOR			
CATALOG NUMBER: AUR			
SIZE C	DWG NO. C-4244	PART / ASSY NO. SEE TABLE	REV 07
SCALE: NS	DRN BY: EL	DATE: 03/12/56	SHEET 1 OF 2

CATALOG NUMBER	BUS SIZE I.P.S.	BOLT CIRCLE DIA.	DIMENSIONS IN INCHES									
			A	B	C	D	E	F	J	K	T	
AUR-04-3	0.500	3.000	7.250	3.125	1.750	4.250	0.313	2.625	0.500	0.563 X 0.750	--	
AUR-04-7	0.500	7.000	11.375	3.125	1.750	8.500	0.375	2.625	0.500	0.813 X 1.063	--	
AUR-06-3	0.750	3.000	7.375	3.313	2.000	4.250	0.375	2.875	0.500	0.563 X 0.750	--	
AUR-06-5	0.750	5.000	9.313	3.313	2.250	6.250	0.375	3.125	0.500	0.688 X 0.875	--	
AUR-06-7	0.750	7.000	11.563	3.375	2.250	8.500	0.500	3.125	0.500	0.813 X 1.063	--	
AUR-10-2	1.000	2.000	6.000	3.500	2.000	3.000	0.375	3.250	0.375	0.438 X 0.875	--	
AUR-10-3	1.000	3.000	7.313	3.563	2.000	4.250	0.375	3.000	0.500	0.563 X 0.750	--	
AUR-10-5	1.000	5.000	9.313	3.563	2.250	6.250	0.375	3.250	0.500	0.688 X 0.875	--	
AUR-10-7	1.000	7.000	11.563	3.750	2.250	8.500	0.500	3.250	0.500	0.813 X 1.063	--	
AUR-12-3	1.250	3.000	7.375	3.938	2.250	4.250	0.375	3.500	0.500	0.563 X 0.750	--	
AUR-12-5	1.250	5.000	9.375	3.938	2.375	6.250	0.375	3.625	0.500	0.688 X 0.875	--	
AUR-12-7	1.250	7.000	11.563	4.250	2.375	8.500	0.500	3.625	0.500	0.813 X 1.063	--	
AUR-14-2	1.500	2.000	6.125	4.125	2.500	3.000	0.375	--	0.500	0.438 X 0.875	--	
AUR-14-3	1.500	3.000	7.375	4.125	2.500	4.250	0.375	3.875	0.500	0.563 X 0.750	--	
AUR-14-5	1.500	5.000	9.375	4.125	2.500	6.250	0.375	4.031	0.500	0.688 X 0.875	--	
AUR-14-7	1.500	7.000	11.625	4.250	2.500	8.500	0.500	3.875	0.500	0.813 X 1.063	--	
AUR-20-3	2.000	3.000	7.438	4.688	2.750	4.250	0.375	4.375	0.500	0.563 X 0.750	--	
AUR-20-5	2.000	5.000	9.438	4.688	2.750	6.250	0.375	4.375	0.500	0.688 X 0.875	--	
AUR-20-7	2.000	7.000	11.875	4.688	2.750	8.500	0.500	4.406	0.500	0.813 X 1.063	--	
AUR-24-3	2.500	3.000	8.188	5.563	3.125	4.250	0.375	5.000	0.500	0.563 X 0.750	--	
AUR-24-5	2.500	5.000	10.250	5.563	3.125	6.250	0.375	5.063	0.625	0.688 X 0.875	--	
AUR-24-7	2.500	7.000	12.438	5.563	3.125	8.500	0.500	5.000	0.625	0.813 X 1.063	--	
AUR-30-3	3.000	3.000	8.375	6.188	3.625	4.250	0.375	5.875	0.625	0.563 X 0.750	--	
AUR-30-3-TES	3.781	3.000	8.625	6.438	3.625	4.250	0.375	6.094	0.625	0.563 X 0.750	--	
AUR-30-5	3.000	5.000	10.000	6.188	3.625	6.250	0.375	6.031	0.625	0.688 X 0.875	--	
AUR-30-7	3.000	7.000	12.563	6.188	3.625	8.500	0.500	6.000	0.625	0.813 X 1.063	--	
AUR-34-3	3.500	3.000	8.375	6.813	4.000	4.250	0.375	6.500	0.625	0.563 X 0.750	--	
AUR-34-5	3.500	5.000	10.375	6.813	4.000	6.250	0.500	6.875	0.625	0.688 X 0.875	--	
AUR-34-7	3.500	7.000	12.625	6.875	4.000	8.500	0.500	6.875	0.625	0.813 X 1.063	--	
AUR-40-3	4.000	3.000	8.188	7.313	4.500	4.250	0.375	7.250	0.625	0.563 X 0.750	--	
AUR-40-5	4.000	5.000	10.188	7.313	4.500	6.250	0.500	7.250	0.625	0.688 X 0.875	--	
AUR-40-5-5	4.0000	5.000	10.188	7.313	5.000	6.250	0.500	7.250	0.625	0.688 X 0.875	--	
AUR-40-5-BE	4.0000	5.000	10.188	7.313	4.500	6.250	0.500	7.250	0.625	0.688 X 0.875	1.500	
AUR-40-7	4.000	7.000	12.688	8.000	4.500	8.500	0.500	7.250	0.625	0.813 X 1.063	--	
AUR-44-5	4.500	5.000	10.000	8.000	4.750	6.250	0.500	7.938	0.625	0.688 X 0.875	--	
AUR-50-3	5.000	3.000	10.000	8.250	4.875	4.250	0.500	8.156	0.625	0.563 X 0.750	--	
AUR-50-5	5.000	5.000	10.625	8.250	4.875	6.250	0.500	8.250	0.625	0.688 X 0.875	--	
AUR-50-5-5	5.000	5.000	11.188	8.250	5.000	6.250	0.500	8.375	0.625	0.688 X 0.875	--	
AUR-50-7	5.000	7.000	12.750	8.250	4.875	8.500	0.500	8.250	0.625	0.813 X 1.063	--	
AUR-60-3	6.000	3.000	8.250	9.375	5.375	4.250	0.500	9.250	0.625	0.563 X 0.750	--	
AUR-60-5	6.000	5.000	11.500	9.375	5.375	6.250	0.500	9.250	0.625	0.688 X 0.875	--	
AUR-60-7	6.000	7.000	13.375	9.375	5.375	8.500	0.500	9.250	0.625	0.813 X 1.000	--	
AUR-70-5-TPL	7.500 O.D.	5.000	12.125	10.188	6.375	6.250	0.500	10.688	0.625	0.688 X 0.875	--	
AUR-80-5	8.000	5.000	12.125	11.313	6.375	6.250	0.500	11.563	0.625	0.688 X 0.875	--	
AUR-10-OD-5	10.000 O.D.	5.000	12.500	12.688	7.000	6.250	0.500	12.750	0.625	0.688 X 0.875	--	

CATALOG NUMBER: AUR			
SIZE	DWG NO.	PART / ASSY NO.	REV
C	C-4244	SEE TABLE	07
SCALE: NS	DRN BY: EL	DATE: 03/12/56	SHEET 2 of 2